



NWB-HC NovaWheel™ Dryers

NWB-HC and NWB-HC+ Dryer/Hopper Series

NWB-HC+ Series include a 7" color touch screen PLC control with unique standard features that others call options!

This portable hopper/dryer combination is designed so you can add a vacuum loader and dry material anywhere in your plant. This energy saving NovaWheel™ dryer design includes a 4" or 7" color touch screen PLC that is easier to use than any other dry/convey control. Plus, there are standard dryer features not found on competitive models.



NWB-50-HC+

NWB-HC+ models include these unique features:

7" Hi-Res Color Touch Screen PLC Control

Intuitive icons guide operator through set-up and monitors all drying parameters.

OverDry Protection

Unique feature that eliminates over-drying of nylons and other sensitive resins.

Intuitive Control With Diagnostics Guide

A trouble shooting guide, complete with photos on the touch screen walk you through operational alarms as well as routine maintenance.

Ethernet Ready Plus SD Card

Smart Ethernet connection with data logging and trending.

Networking Capability

ColorNet™ networkable color HMI

Standard Features - All Models

Intelligent Regeneration

Monitors the regeneration process and makes changes, automatically, to minimize the energy used to no more than that required.

Standard Three Phase Detection

Detects phase error and provides alarm.

Auto-Start/Stop Timer

Set for any combination of hours per day and days per week.

Automatic Monitoring and Alarm of Dryer Filter Condition

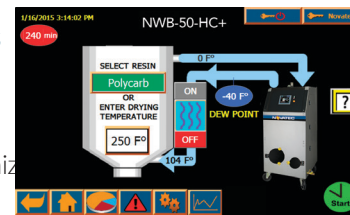
Operator is alerted with alarm light when process or regeneration filters need to be cleaned or replaced.

High Efficiency Stainless Steel Hopper

Fully insulated with full-length sight glass and pellet screen.

Hopper and Dryer Uncouple

For use as separate units.



7" Color Touch Screen

No-Charge Standards

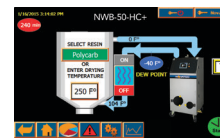
- Dew point analyzer with indication and alarm
- Red/green alarm light

5-Year Warranty

For lowest cost of ownership.

NWB-HC-25 through -200 models

Includes a 4" color touch screen PLC control and standard features shown, plus USB memory stick for data logging and trending.



4" Color Touch Screen

Plus

- › Separate process and regeneration blowers
- › Cooling coil with plasticizer drain for temperatures above 225°F
- › -40° Dew point guaranteed
- › Open access to all components
- › Process temperatures up to 350°F with interlock to heaters
- › 5" Casters for mobility
- › 460/3/60 VAC standard
- › 5-Year warranty on ALL models

Raising the Bar for Mobile Wheel Dryers

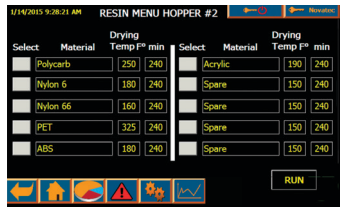
5
YEAR
warranty

Standard SS insulated hopper

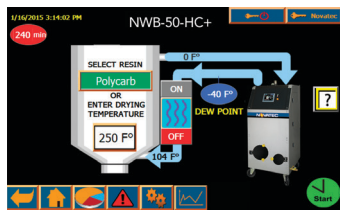
Automatically adjusts air temperature based on monitoring to regulate temperature in hopper

Standard LED alarm light

Smart PLC touch screen makes setup easy

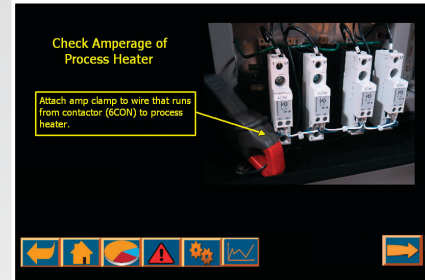


1. Select resin



2. Start drying

Smart upgraded software senses faults and pictorially guides you to a solution



Siemens PLC with 4" or 7" high resolution color touch screen

Dew point included at no extra charge

Standard data logging

Ethernet ready (Plus models)

Exclusive OverDry Protection Ideal for nylon and other sensitive materials (Plus models)

5-year desiccant wheel warranty

Minimizes energy consumption by continuously adjusting heater and air temperatures

Standard phase detector avoids phase issues when moved around plant

Automatically tells you when to change filters

Standard EZ push handles

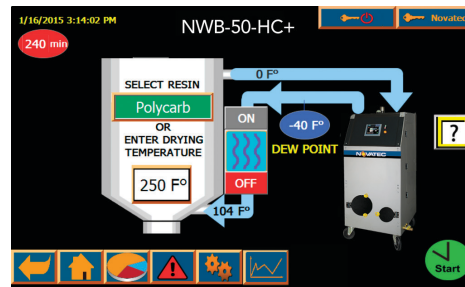
Built-in Standards...Sold as Options Everywhere Else!

- › Upgraded Siemens PLC with 4" or 7" high resolution display
- › Displays drying faults and uses pictorial solution screens
- › Automatically detects and avoids over-drying (Plus models)
- › Smart Ethernet connection with data logging (Plus models)

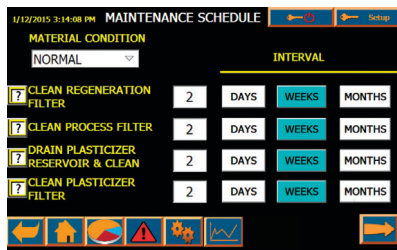
Siemens Color Touch Screen PLC Control Equals **Convenience and Reliability**

Another Novatec First...

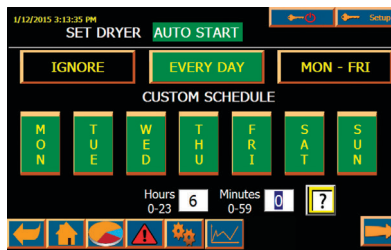
- › No more confusing codes
 - › No annoying function buttons
 - › No manual look-ups
- Simply touch any of the intuitive icons to access related screens.



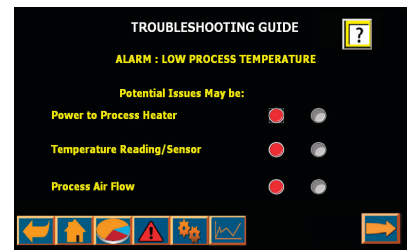
Operation Screen



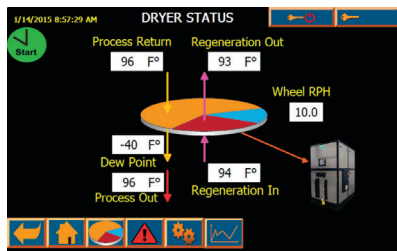
Maintenance Schedule



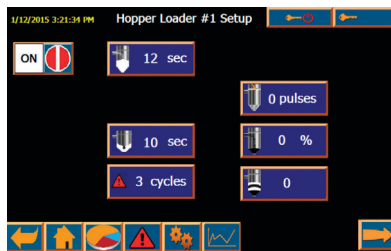
Auto-Start/Stop Menu



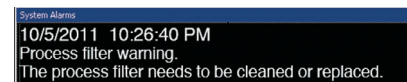
Troubleshooting Guide



Dryer Status Screen



Setup Screens for Hopper and Machine Loading



Process and Regeneration Filter Conditions are Automatically Monitored and Displayed.

Main Features:

- › Intuitive touch screen for ease of operation
- › No confusing alarm codes to look up
- › Seven day timer – for auto on/off
- › Filter maintenance alerts with oversized filters
- › Set points with deviation limits
- › Dew point sensor
- › Real-time clock with battery backup

Features	NovaTouch Control
Touch Screen Entry	Standard
Control Temperature #1	Standard
Second Set-point	Standard
Over-temperature Alarm and Shutdown	Standard
Hygro Dew Point Sensor	Standard
Real Time Clock	Standard
Seven Day Timer	Standard
Auto Start/Stop	Standard
High/Low Temperature Alarm	Standard
Warning and Error Messages	Standard
Battery Backup	Standard
EEPROM	Standard
Blower Differential Pressure Switch	Standard
Calibration Feature and Set Point Secure	Standard
Set Deviation Limits	Standard
Language Capabilities	Standard
PLC Diagnostics	Standard
*Adjust PID Settings	Standard

*By Novatec only

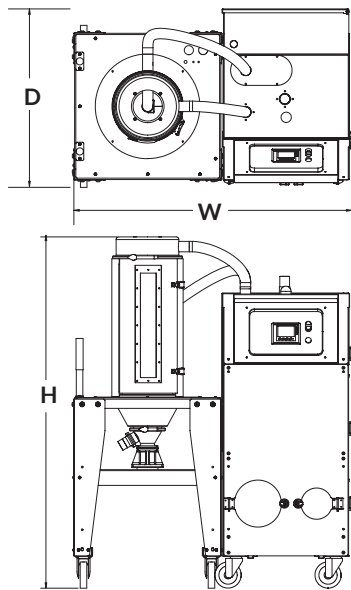
Specifications:

Model Number*	Width		Depth		Height		Air Connection		Hopper Capacity**		Throughput Capacity**			
	in	cm	in	cm	in	cm	in	cm	lb	Kg	@460/3/60		@415/3/50	@575/3/60
											lb/hr	Kg/hr	Kg/hr	Kg/hr
NWB-25-HC+	55.7	142	32.8	83.0	67.3	171	2	5	55	25	25	11.5	10	11.5
NWB-50-HC+					70.6	179	2	5	110	50	50	22.7	19	22.7
NWB-75-HC+					86.6	220	2	10	165	75	75	34.1	29	34.1
NWB-100-HC+	61.4	156	33.9	84	79.2	201	4	10	220	100	100	45	38	45
NWB-150-HC+***					92.7	235	4	10	330	150	150	68	57	68
NWB-200-HC+***	70.6	179	37.1	94	93.5	237	6	10	600	272	200	91	74	91
NWB-300-HC+***			51	130	106.2	270	6	10	800	363	300	136	110	136

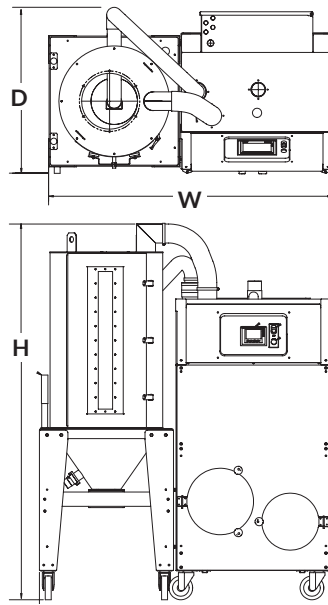
*Specify + after model number for 7" color screen. Delete + for 4" color screen through -200. ** Based on polycarbonate pellets @ 38 lb/ft³

***Casters or hopper extension are packed separately to avoid extra freight charges due to height.

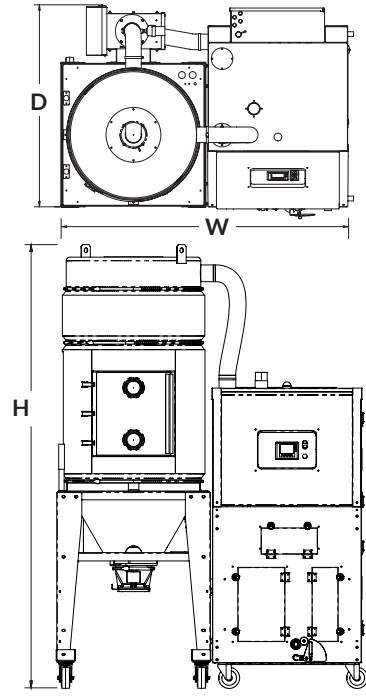
NOTE: Dimensions and throughput are the same for -HC and -HC+ models.



NWB-25-HC+ through NWB-75-HC+



NWB-100-HC+ through NWB-200-HC+



NWB-300-HC+

Options:

Thermal+ For All Plus Models: Ensures that new heat-sensitive resins are dried properly. See separate data sheet.

Water Saver: Reduces energy usage by ensuring that no more cooling takes place in an external cooling coil than is required (Plus models)

Alternate Voltages: (in lieu of 460V/3ph/60Hz)
415/3/50 (no charge) or 460/3/60-CUL, 575/3/60-CUL, 230/3/60

Accessories:

Stainless Steel Hopper Extensions for -HC and -HC+:

25 lb for -25 70 lb for -50 110 lb for -100
200 lb with or without sight glasses for -200 and -300

External Process Air Cooling Coil on Stand or on Stand with Plasticizer Trap: (For -300 models only) Drying temperatures less than 170°F (77°C) require an external process air cooling coil. Please contact factory for options.



Thermal+™ Option for NWB+ Series

Protection from Over-Drying for Sensitive Resins

NWB+, NWB-DC+ and NWB-HC+ press-side dryers now available with Thermal+ option

NWB+ series press-side dryers up to 150 lb/hr can now be equipped with Thermal+ from Novatec to ensure that new heat-sensitive resins are dried properly.

Processors are being inundated new resins with which they have no previous experience. If they are not dried to the required specifications the molded products produced are subject to rejection due to stringent quality control requirements or they fail prematurely in the field.



How Thermal+ Works...

Automatically Controlled Valving Changes

Sensor measurement out of the drying hopper determines whether moisture is being pulled from the resin, or if the resin is already dried to the appropriate moisture level.

If The Resin Requires More Drying

The sensor in the hopper outlet signals this condition, and dry air is introduced into the loop automatically.

When The Resin Is Dry

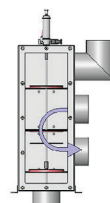
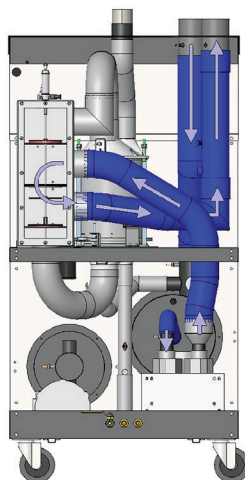
The blower loop will exclude the desiccated -40°F/C air and recirculate heated air.

Additional Drying Is Required At Any Point

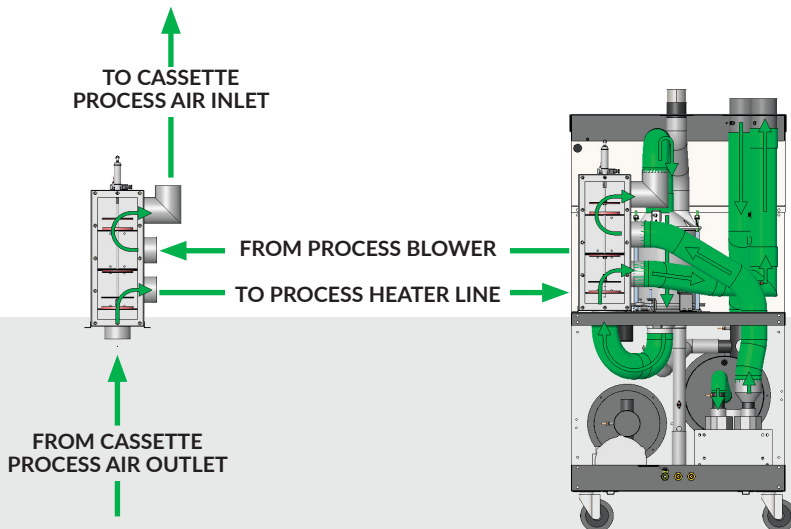
Dry air is introduced into the loop automatically and when the desired dryness is achieved, the desiccant wheel is again bypassed automatically.

All Of These Operations Occur Without Any Operator Intervention

Each resin can have a recipe that always ensures proper resin moisture.



← FROM PROCESS BLOWER
→ TO PROCESS HEATER LINE



↑ TO CASSETTE PROCESS AIR INLET

← FROM PROCESS BLOWER
→ TO PROCESS HEATER LINE

↑ FROM CASSETTE PROCESS AIR OUTLET

- Order option for NWB+ and NWB-HC+
 - KIT-NWB75-HX-01 for -25, -50 and -75 models
 - KIT-NWB150-HX-01 for -100 and -150 models
- Order option for NWB-DC+
 - KIT-NWB75-HX-02 for -25, -50 and -75 models
 - KIT-NWB150-HX-02 for -100 and -150 models