



*Equipment and systems
for automated
plastics processing.*

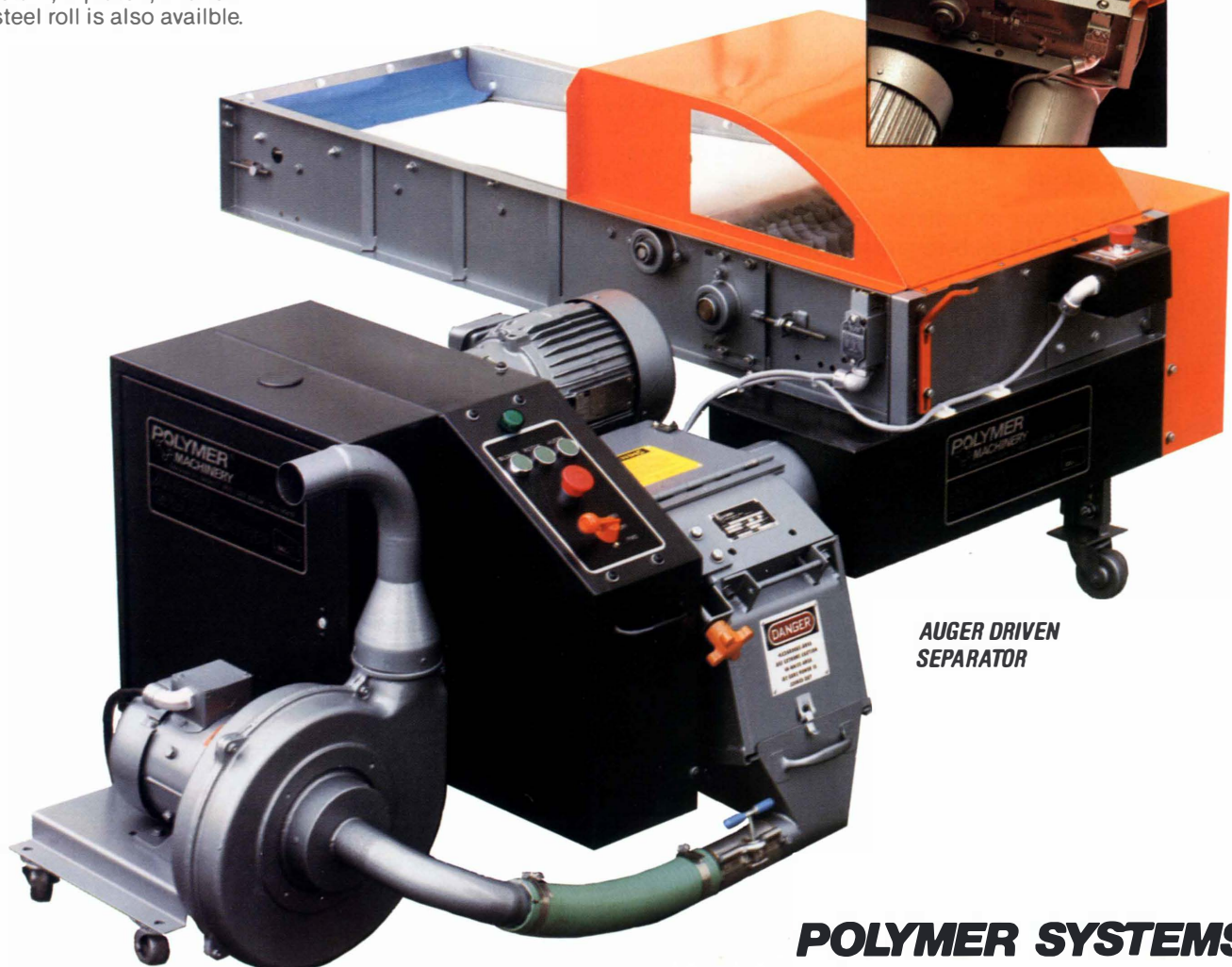
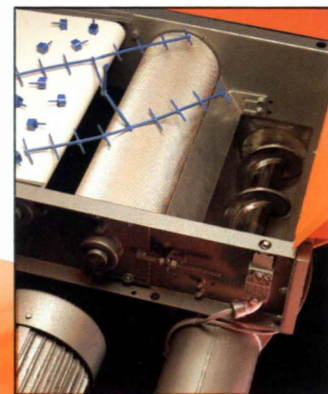
Ask us to review your parts separation problem. We offer a service to evaluate your specific application, and will design a parts separation system for maximum efficiency. In addition to standard models, special sizes and configurations can be supplied to suit special requirements.

- Separator is constructed of heavy gauge welded steel; Conveyor rolls and separator shaft are mounted in heavy-duty flange bearings. Standard separator is supplied with either concentric or eccentric discs at the retain; A plated, knurled-steel roll is also available.

- A V-Belt bonded to the underside of the conveyor belt assures positive tracking.
- Separator discs and conveyor are driven from the granulator auger drive. **NO ADDITIONAL ELECTRICAL MOTOR IS REQUIRED.**
- A slip clutch is placed between the auger drive and the conveyor parts separator for safety.
- Separator discs can be adjusted to separate a variety of finished parts and runners.

PARTS SEPARATORS AND MATERIAL HANDLING CONVEYORS

- The parts separator comes complete with a hinged hood with sight glass and is electrically interlocked to stop the auger when the hood is opened. For added protection, the fully opened hood makes contact with the emergency stop button, and deactivates the complete granulator system.



**AUGER DRIVEN
SEPARATOR**

POLYMER SYSTEMS

AUGER DRIVEN SEPARATORS

PS1236	(belt 12" wide x 36" centers)
PS1250 with outboard legs	(belt 12" wide x 50" centers)
PS1836	(belt 18" wide x 36" centers)
PS1850 with outboard legs	(belt 18" wide x 50" centers)
PS2436	(belt 24" wide x 36" centers)
PS2450 with outboard legs	(belt 24" wide x 50" centers)

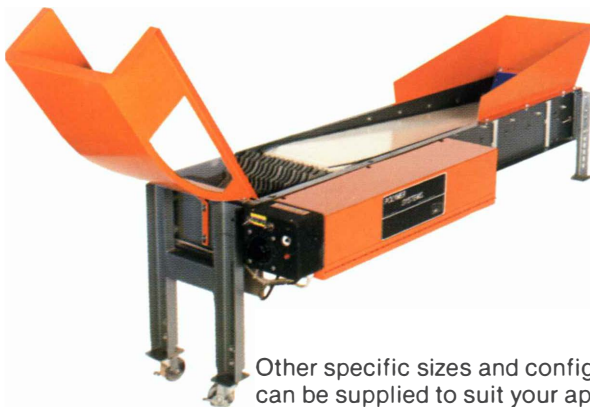
Outboard legs for shorter separators:
 For Double Disk Separator 12" wide
 For Double Disk Separator 18" wide
 For 18" knurled roller in place of discs
 For 12" knurled roller in place of discs

FREE STANDING PARTS SEPARATOR



The free standing separator is a totally independent machine. It is located over the auger trough and is separately driven by a 1/4 HP drive with right angle gearbox, 115 volt. A variable speed drive (shown) is optional.

PPS-1250 with outboard legs (belt 12" wide x 50" centers)
 PPS-1850 with outboard legs (belt 18" wide x 50" centers)



Other specific sizes and configurations can be supplied to suit your applications.

MATERIAL HANDLING CONVEYORS



FEATURES

- Versatility (adjustable angle)
- Rugged steel construction
- Adjustable height, tilt and belt tension
- Permanently lubricated self aligning bearings
- Totally enclosed motor & drive
- 8 Ft. long 16-3 power cord
- Totally self contained
- PVC food grade belt, smooth top easy to clean
- 1 in. high belt cleats
- Crowned steel pulleys and in-belt tracking
- Belt held down outside of frame resulting in no parts damage
- 6" high side extensions
- Manual motor starter with overload protection

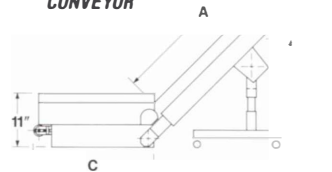
OPTIONS

- Side extensions
- DC/SCR variable speed drive
- Stainless steel construction
- Other belt materials
- Custom sizes upon request
- 220/440 (3) phase drive motor
- Special paint

SPECIFICATIONS

- 1/3 Hp. Motor, 115/230 V. 60 Hz. Single Phase
- Belt speed 20 Fpm (STD.)
- Right angle gear reducer 60:1 gear ratio

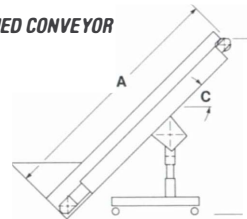
HORIZONTAL TO VERTICAL CONVEYOR



Belt Width (in.)	A (in.)	B (in.) @ 45°	C (in.)
6	24	36	24-36
	28	45	- 48
	36	54	60
	48	62	
	60	70	
12	72	79	
	84	88	
	96		

Adjustable 30° to 45°

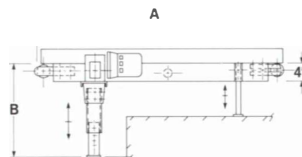
INCLINED CONVEYOR



Belt Width (in.)	A (in.)	B (in.) @ 45°	C
6	8	36	
	12	45	
	18	54	
	24	62	
	36	70	
12	48	79	
	60	88	
	72		

Adjustable 30° to 45°

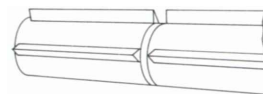
FLAT CONVEYOR



Belt Width (in.)	A (in.)	B (in.)
6	8	48
	18	60
	24	72
	36	84
	48	96
12	60	120
	72	

12" thru 24" Other Sizes Available

V-BELT TRACKING



SPECIAL OPTIONS

- Casters
- Hinged Lexan Cover
- Spiral Type Bolt-On Separator
- Belt Edge Guards

Automatic weighing and carton transfer

We can provide systems to weigh material, remove and replace cartons during the manufacturing process. Polymer Systems will design to suit your application requirements. Ask us.



Plastec U.S.A. Incorporated

7752 N.W. 74th Avenue, Miami, FL 33166
 Tel.: (305) 887-6920

plastec@plastecusa.com
 www.plastecusa.com